

# Bicycle Routes

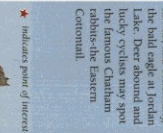
**Chatham County's** rolling, terrain, quiet countryside, and scenic views provide an excellent backdrop for bicycle travel. The map on the reverse shows 198-mile systems of bicycle routes which utilize lightly-travelled county roads to connect the towns, crossroad communities and points of interest in the county. The system includes three signed county routes, two signed cross-state routes and additional suggested routes which are shown on the map, but are not marked with signs on the road. These connector routes include a loop route in the southwestern corner of the county, two short routes which provide connections to the neighboring Alamance and Wayne County bicycle route systems, and a loop route which connects back to the Alamance County route.

**Chatham County Signed Routes** are marked with bicycle route signs. Several sections of these routes that carry higher volumes of traffic are marked with "Share the Road" signs to alert motorists that bicyclists may be on the road.



**Route 3** (37 miles) runs north to south through the middle of Chatham County. Five miles south of the Orange County line, the route intersects with Route 5. From there the route proceeds into Bryum. Sleep terrain through this area leads down to the Haw River where the route crosses the narrow one-lane Bryum Bridge. Fall in fall to replace a section of the river is exposed, and, after a good rain, the streamer comes lining the river as reflected on the high water, both are splendid views. Mills have existed at this site since 1800. The original grist mill was converted to a spinning mill in 1872 and remained in operation until 1985. The mill village, just off the route on "Mill Hill", includes homes built for the mill workers between 1872 and 1928. In Bryum cyclists can pick up the Bryum-Jordan Lake Connector, which ends at Route 4, or the minor route, the U.S. 64 intersection. Numerous historical buildings and Pindeben's charming downtown area invite exploration. The Chatham County Courthouse, the Masonic Lodge, and the Minny Law Office are the Presbyterian Church and the Justice Motor Company building are all worth seeing, as are the numerous historic homes along the route. The route continues past Memory Methodist Church, through rural and residential areas, into Goldston. This charming historical town, named the U.S. 64 intersection.

Passing picturesque dairy farms, cotton fields and woodlands, cyclists will encounter historical farmhouses, log cabins and tobacco barns, and tobacco barns, to the 19th century. Charming churches are scattered throughout the rolling farmland and densely wooded areas. Birds are predominant in the abundant wildlife, from hummingbirds to owls, the bald eagle in Jordan Lake. Deer abound and Lake. Deer sound and Lake. Deer sound and Lake. Deer sound may spot the famous Chatham rabbies: the Eastern Cottontail.



Indicates point of interest

(black and white)  
Belted Galloway



American Quarterhorse

(black and white)  
American Quarterhorse



(black and white)  
Holslein



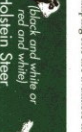
Jersey



Eastern Cottontail



(black and white)  
Holslein Sheer



(black)  
Milking Shorthorn



Guernsey

## Connector Routes

**Suggested Connector Routes** are highlighted on the map but are not marked with signs on the road. These routes provide connections to neighboring county bicycle route systems.

by the Hied Hiedley, the Joseph Jordan house is an example of the Queen Anne style and two specimens of Colonial Revival architecture are the Croston-Halley House and the Mabines-Wren House. The granite-crowned City Hall, built in 1939, and the mural in the U.S. Post Office, painted by N.Y. artist Maxwell Starr, are two examples of Works Project Administration (WPA) projects. Riders passing through Mt. Vernon Springs can refresh themselves with water from one of the two mineral spring pipes named after the Hied Hiedley.

where cows and horses graze make for a picturesque tour through the countryside. At Cornfield Crossroads, cyclists can head north to connect with the Alamance County Bicycle routes or turn south to the route's end which intersects with Route 4 in Siler City (see Siler City description under Route 4).

**The Bicycling Highways Routes** connect the distant corners of North Carolina via 3,000 miles of highly traveled, scenic back roads. Two of these routes, the Carolina and the Piedmont (U.S. 52, U.S. 64, N.C. Bk. Route 2), pass through Chatham County, both are marked with signs. Maps of these and other routes can be obtained from the Office of Bicycle and Pedestrian Transportation (see Resource Section for address).



**Carolina Connector, U.S. Bk. Route 1** (9 miles), is part of a 180-mile north-south route which begins near Lexington and passes through the southeastern corner of Chatham County. Starting from the Wake and Chatham county line, the route passes through Merry Oaks, intersects with a connector route to Jordan Lake and crosses the Haw River to Haywood where it intersects with Route 4. The route continues south to the Lee County line.

**The Cornfield Crossroads-Alamance Co. Connector** (2.5mi.) provides a direct connection via S.R. 1004 to Snow Camp where it intersects with the Alamance County Bicycle Route system. Maps of these routes can be obtained from the Office of Bicycle and Pedestrian Transportation (see Resources section for address).

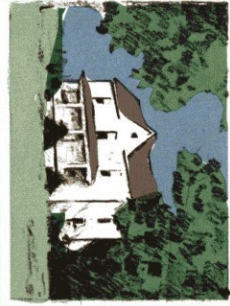
**The Jordan Lake Connector Routes** provide access to Jordan Lake. Its extensive views, recreational opportunities and camping areas are a primary destination for many cyclists. The main roads connecting the Chatham County communities to the lake are busy. Even the county roads can become busy during the summer months and on pretty spring and fall weekends. Therefore, the routes highlighted as connectors from Pindeben, Bryum and between Route 1 and 2 are regarded as off-season connectors only. Please be cautious as you travel these roads; they are narrow and carry many vehicles pulling boats and campers.

"Heather" and "Beany," traveling toward Gold through pastoral settings, cyclists can see many farm animals, including cows, horses, sheep and goats. Sites of interest in Gold include the St. Mark's cemetery, containing the graves of General Plantation owners and Civil War soldiers, the Harpison-Slater Cemetery, and the site of the former plantation house, built in 1808. Although the bridge is no longer in use, it offers a perfect site for a picnic and a beautiful view of the Deep River.

**The Mountains to Sea, N.C. Bk. Route 3** (70-mile) route crosses the state from Murphy to Marion. This 70-mile route forms the backbone of the bicycling highway system. The route passes through the northeast corner of Chatham County, from Orange County to Wake County, intersects with Route 3 and connects to Jordan Lake. Rural residential areas, historical sites, and scenic views are highlighted. Horse paths lead to the lake. Panoramic views of Jordan Lake feature brilliant field colors in the fall and sunbathers during the summer.

**The Bryum-Jordan Lake Connector** (7mi.) begins at Route 3 in Bryum and winds through wooded areas along roads with steep grades and no shoulders. The route passes through Griffins Crossroads, heading downhill to Vista Point Recreation Area. On Jordan Lake, picnic tables, restrooms and a group camping site are available here.

**A Note of Caution**  
The highlighted bicycle routes and unsigned connectors shown on this map are routed along roads of the North Carolina highway system. These roads do not include any special accommodations for bicyclists, such as paved shoulders or designated bike lanes. Care has been taken to select routes where traffic is light. In a few places, however, street segments of more heavily traveled roads are used to make connections between routes. Cyclists should exercise extreme caution when sharing the road with motor vehicles, especially in the presence of bicyclists. The Chatham County bike routes are not designed to be used by children, as their ability to judge traffic conditions and driver actions is not well developed.



The Pindeben-Jordan Lake Connector (11 miles) follows quiet residential streets as it heads east out of Jordan Lake into the scenic country lanes which lead to Jordan Lake. The middle section of the route is a dirt road with steep grades leading to a creek. The route provides a shortcut from Route 3 to Route 4 just north of Haywood and Bicycle Route 1.