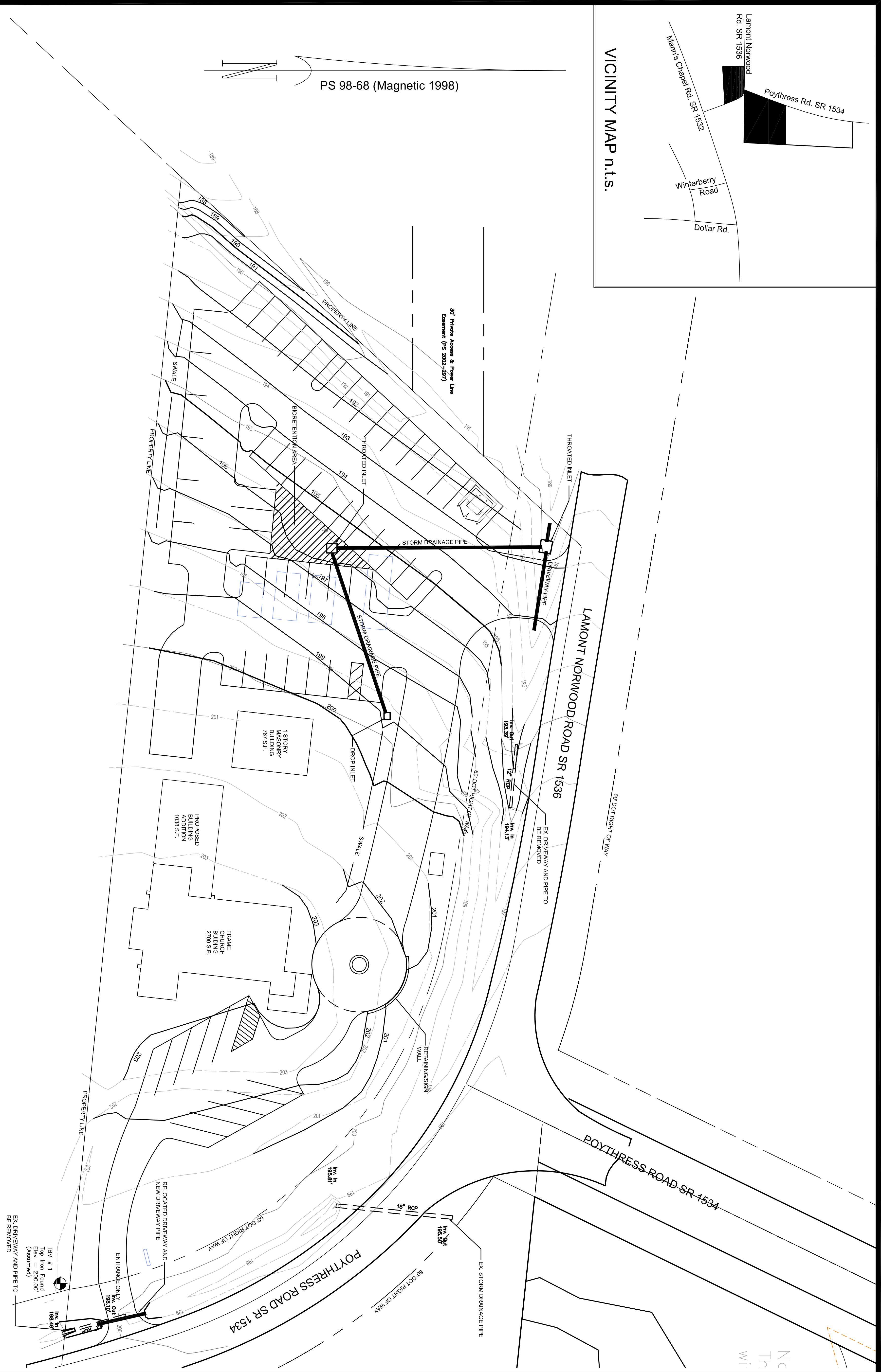
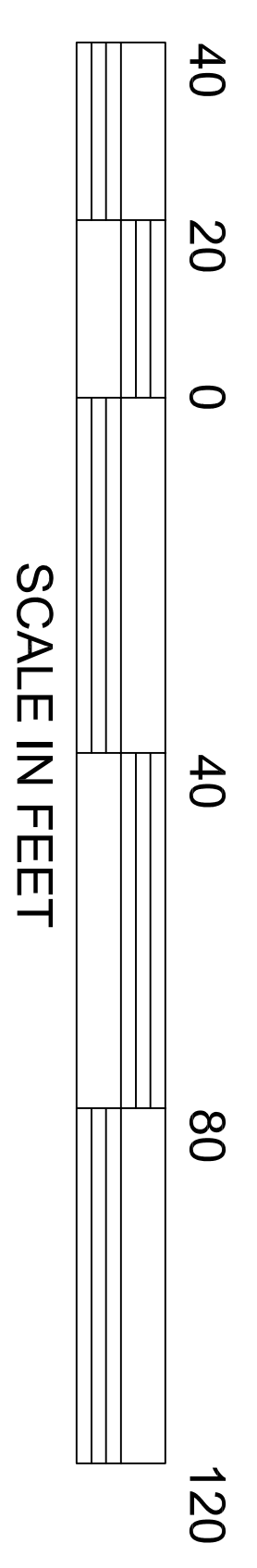


PS 98-68 (Magnetic 1998)



WATERSHED: WS IV PA
 NOTE: BOUNDARY, TOPOGRAPHIC AND EXISTING CONDITIONS SURVEY DATA PROVIDED BY HOLLAND LAND SURVEYING, CHAPEL HILL, NC, IN ELECTRONIC FORMAT, AUGUST, 2008.

PRELIMINARY
 FOR REVIEW ONLY
 NOT RELEASED
 FOR CONSTRUCTION

SHEET TITLE
**PRELIMINARY
 GRADING AND
 STORMWATER PLAN**
 PARCEL A

C1.1

REVISIONS

PROJECT/ OWNER
**HISTORIC MANN'S
 CHAPEL PROJECT**

175 POYTHRESS RD.
 CHAPEL HILL, NC 27516

SEAL



CE Group, INC.
 LAND PLANNING
 CIVIL ENGINEERING
 LAND SURVEYING
 11000 Research Parkway, Suite 410, Cary, N.C. 27513
 Voice: (919) 367-6790 Fax: (919) 367-6791