

Mark Ashness

From: Mark Ashness [mark@cegrouppinc.com]
Sent: Wednesday, February 07, 2007 2:20 PM
To: 'pyb@earthlink.net'
Subject: Williams Tract, Bynum Ridge Road

Jane: This was the other parcel we spoke about this morning.

The parcel # is 0002048

The pin # is 9763 00 38 1356

We are not aware of any structures on the property. We will be submitting to the County at the end of the week for a Planning Board meeting on March 7th. Please review and furnish any comments to Lynn Richardson and myself prior to the meeting.

Both of these projects are 5 AC lot projects.

Thanks for your help.

Mark Ashness, PE ASLA

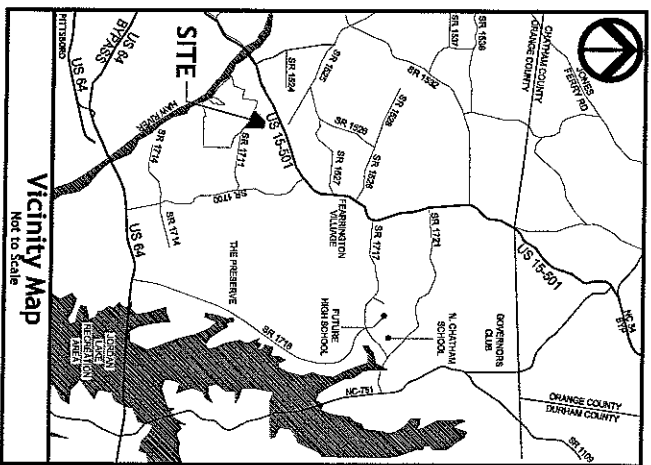
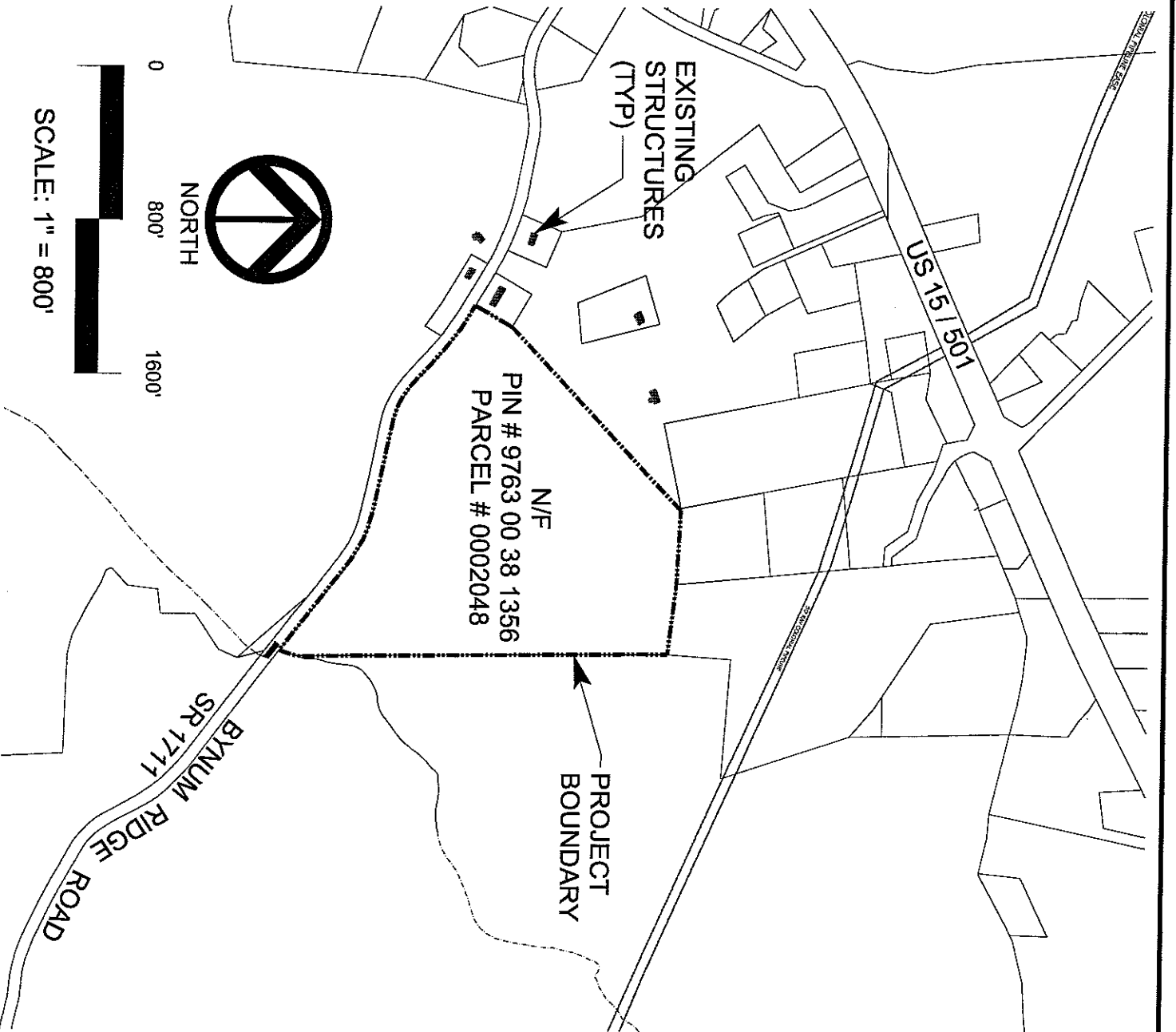
CE Group, INC

11000 Regency Parkway
Suite 410
Cary, NC 27511
(919) 367-8790 phone
(919) 367-8791 fax
(919) 606-7704 mobile

Williams Property
Chatham County, North Carolina

EXISTING STRUCTURES

February 7, 2007



CE Group, Inc.
LAND PLANNING
CIVIL ENGINEERING
CONSTRUCTION MANAGEMENT
11000 Regency Parkway, Suite 410, Cary, N.C. 27511
Voice (919) 567-5750 Fax (919) 567-5751